

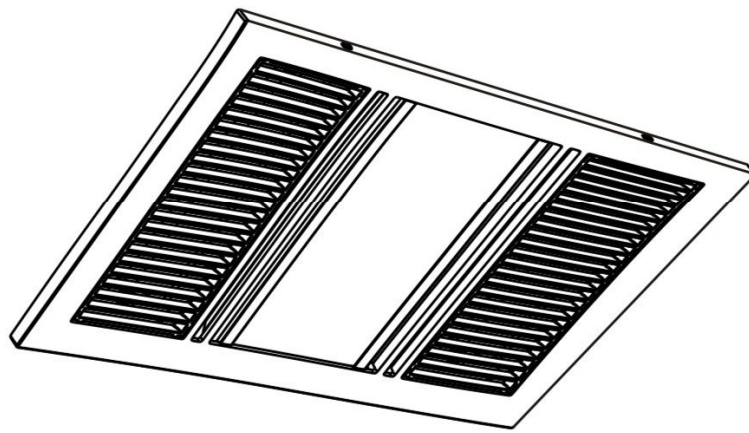
PRO-V

by ventair[™]

AIRBUS

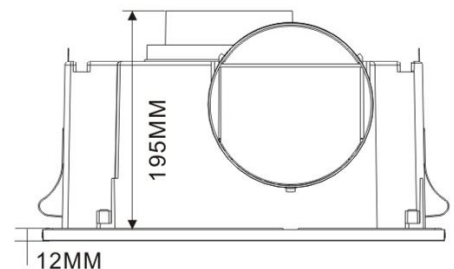
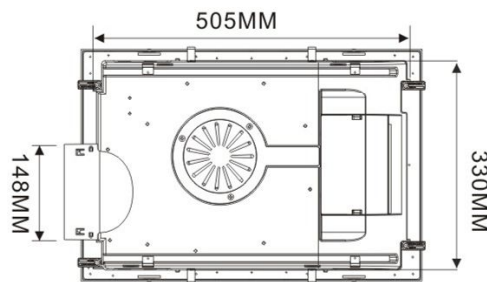
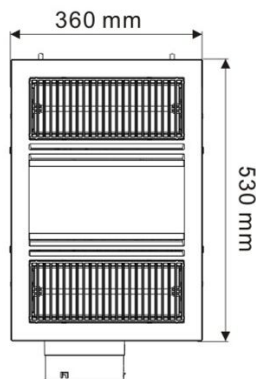
TOTAL EXHAUST SOLUTION
3-IN-1 BATHROOM

IMPORTANT INSTALLATION AND INSTRUCTION



Thank you and congratulations on your purchase of the Ventair Pro-V AIRBUS 3-in-1. Please read these instructions carefully before installing and using the product. Keep the instructions handy for future reference. Electrical wiring must only be done by a licensed electrician and a "Certificate of Compliance" must be issued on completion of the installation.

LINE DRAWING AND DIMENSIONS



LOCATION

The unit must be located and installed in accordance with AS/NZS 3000 and local building codes relating to damp situations.

The unit can be installed in any room that requires direct radiant heating and circulated air flow such as bathrooms, ensuites, laundries etc. The unit can be installed in flat ceilings with a minimum height of 2.3 metres. At least 220mm height clearance in the ceiling cavity is required to ensure sufficient ventilation for moisture to disperse. The unit must also be installed at least 250mm away from the walls.

Ensure adequate air inlets exist through windows, vents or under the door for air flow.

Regulations concerning the discharge of air have to be fulfilled.

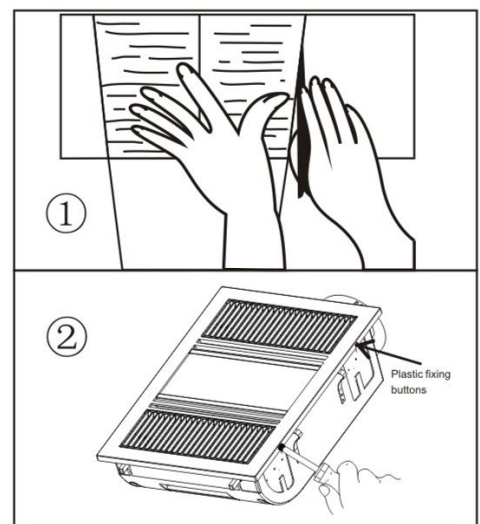
POWER

AC220~240V, 50Hz electrical supply is required. The unit can be connected to a lighting or power circuit if loading permits. All electrical work must be carried out in accordance with AS/NZS 3000 or latest edition thereof, and local building codes and regulations. A four gang switch is included for all kinds of wiring combinations, eg.: One "HEAT" for 1 heat lamp and two "HEAT" for 2 heat lamps. Ensure that supply power is isolated before commencing installation.

MOUNTING

1. Use this card in its open state as a template. Place in the required location and mark out the hole cutting size. The hole size is 505mm x 330mm. Before commencing cutting ensure that the intended location is clear of all cables, pipes and joists. Once clear, cut out the section along the previously marked lines.

2. Remove fascia by gently pressing plastic fixing buttons on side of fascia.

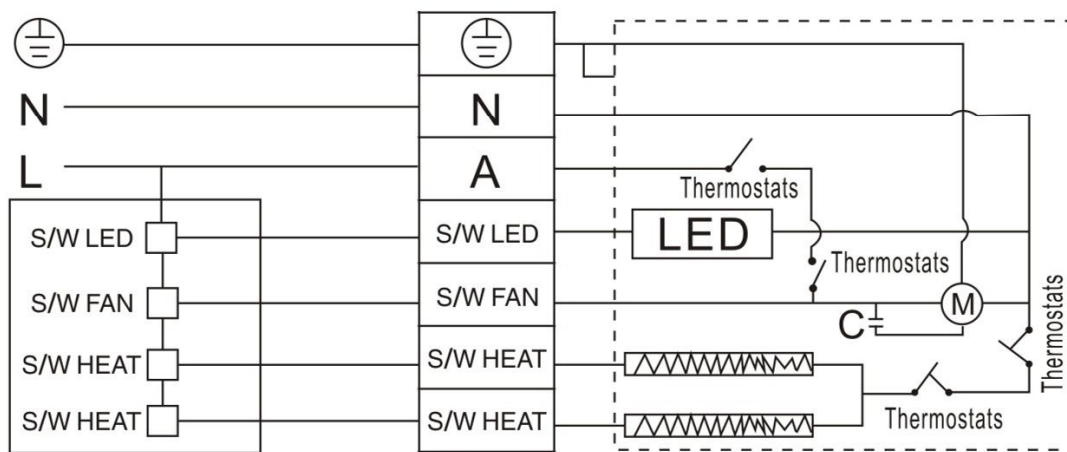


ELECTRICAL WIRING

The bathroom heater unit must be wired through either a plug and socket or an all-pole disconnecting switch in accordance with Australian Wiring Rules AS/NZS 3000.

Note: This unit is fitted with two thermostats, one will operate to automatically switch the fan on in the event that internal temperature of the unit exceeds 60 degrees , and the other one will switch the heating lamps off in the event that the internal temperature of the unit exceeds 100 degrees .

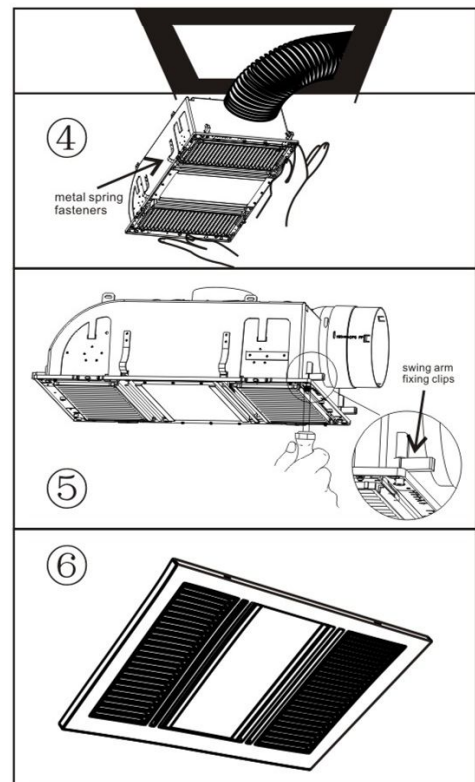
3. Remove terminal cover from backside of unit. Connect wires as per wiring diagram (below) and electrical wiring instruction.



4. Connect 150mm ducting (if required) and insert unit into pre-cut hole in ceiling making sure four metal spring fasteners extend fully onto ceiling plaster/gyprock.

5. Gently tighten swing arm fixing clips using philips head screwdriver to ensure clips are located correctly onto ceiling plaster/gyprock.

6. Replace fascia.



CARE AND MAINTENANCE

Please ensure electrical switches are out of reach of any person that may be bathing or showering.

This bathroom heater must not be installed below the electrical outlet.

This bathroom heater must not be installed close to curtains or other combustible materials.

The appliance must under no circumstances to covered with insulation material or similar material.

Joists, beams and rafters shall not be cut or notched to install the appliance.

To clean fascia and surrounds wipe with a damp cloth.

This appliance is not intended for use by persons (including children) with reduced physical, sensory or mental capabilities, or lack of experience and knowledge, unless they have been given supervision or with instruction concerning use of the appliance by a person responsible for their safety.

Children should be supervised to ensure that they do not play with the appliance.

Appliance for indoor use only.

Ensure that the fan is switched off from the supply mains before removing the guard.

The appliance shall, under no circumstances, be covered with insulating material or similar material.

National regulations concerning the discharge of air have to be fulfilled.

Joists, beams and rafters shall not be cut or notched to install the appliance.

Means for disconnection must be incorporated in the fixed wiring in accordance with the wiring rules.

REPLACEMENT LAMPS

HEAT LAMPS(PVP600HL): Available from place of purchase or Ventair Pty Ltd.

CENTRE LED PANEL(PVP18WLED): Available from place of purchase or Ventair Pty Ltd.

Model	Rated Voltage	Motor Input	Heat Tube	LED Light	Air-flow	Noise	Net weight
PVP31HLXWH PVP31HLXS	220-240V 50Hz	65W	2x600W	YH3-H-1 18W 4200K NW	92L/sec	45dB(A)	7.80KGS