

# Ventair<sup>tm</sup>

THE AIR MOVEMENT SPECIALISTS

## 3 IN 1 BATHROOM FAN, HEAT & LIGHT

### IMPORTANT INSTALLATION AND WARRANTY INSTRUCTIONS

Thank you and congratulations on your purchase of the Ventair 3 in1 Bathroom Fan, Heat & Light. Please read these instructions carefully before installing and using the product. Keep the instructions handy for future reference. Electrical wiring must only be done by a licensed electrician and a "Certificate of Compliance" must be issued completion of the installation.

### LOCATION

- 1) Precautions must be taken to avoid the back-flow of gases into the room from the open flue of gas or other fuelburning appliances.
- 2) The distance between the sides of the heater and the sides and any adjacent ceiling recessed heater shall not be less than four times the minimum distance specified for the distance between the sides of the heater and any building element adjacent to it.
- 3) The switches and other controls of the appliance should be installed so that they cannot be touched by a person in the bath or shower.

The unit must be located and installed in accordance with AS/NZS 3000 and local building codes and regulations concerning the discharge of air have to be fulfilled. The unit can be installed in any room that requires direct radiant heating and circulated air flow such as bathrooms, ensuites, laundries etc. The unit can be installed in flat ceilings with a minimum height of 2 meters. At least 250mm height clearance in the ceiling cavity is required to ensure sufficient ventilation for moisture to disperse. The unit must also be installed at least 400mm away from the walls. Between the unit and thermal insulation please also keep 200mm clearance when installation. Ensure adequate inlets exist through windows, vents or under the door for air flow.

### POWER

AC 220-240V, 50Hz electrical supply is required. The unit can be connected to a lighting or power circuit if loading permits. All electrical work must be carried out in accordance with AS/NZS 3000 or latest edition thereof.

### MOUNTING

1. The unit may be mounted either between joists using the inbuilt clip fasteners or against a joist using a screw through the flange plate. Use this card in its open state as a template. Place in the required location and mark out the hole cutting size. Hole size is 320mm x 320mm.

2. Before commencing cutting ensure that the area behind the intended location is clear of all cables, pipes and joists. Once clear, cut out the section along the previously marked lines.

3. Please remove the heating lamps first. Connect the ducting if required to the outer grille of the unit. Insert the unit into the square hole being sure to pull the side clips inward so that the body can pass through the hole without damaging the plaster. Rotate the swing clips to hold motor body in place (figure 1) then tighten screw to let the clip clasp onto the ceiling board (figure 2).

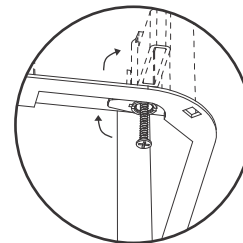


figure 1

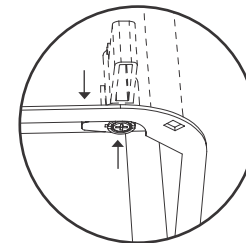
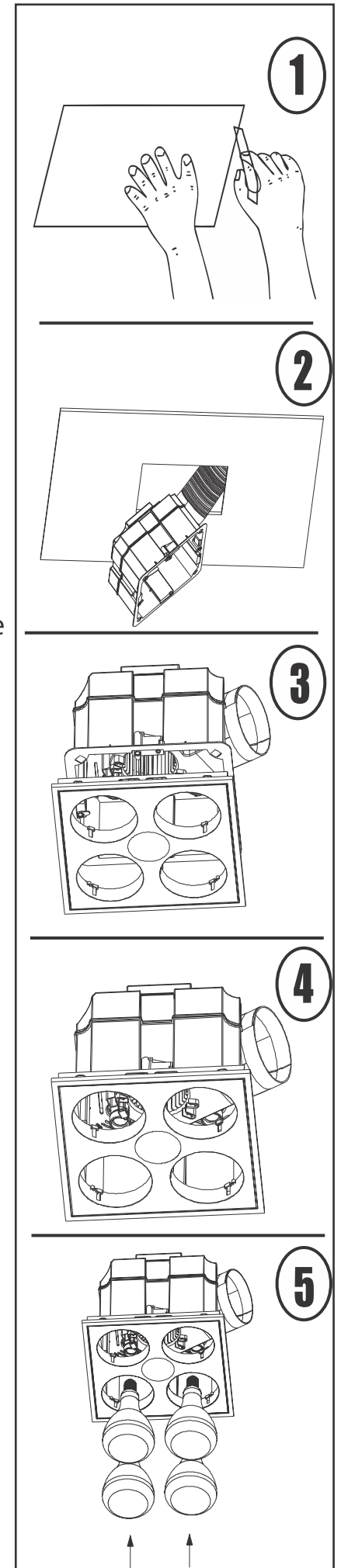


figure 2

4. Connect the led downlight plugs firstly. Hold the fascia against the body of the heater and the ceiling and attach the securing spring clips to hold the fascia in place.

5. Now screw in the four large heat lamps into the lamp holder through the holes provided in the fascia. The globes should be screwed up firmly to ensure a good electrical contact but don't over tighten.

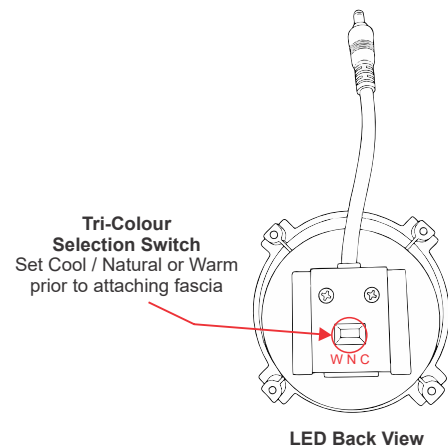
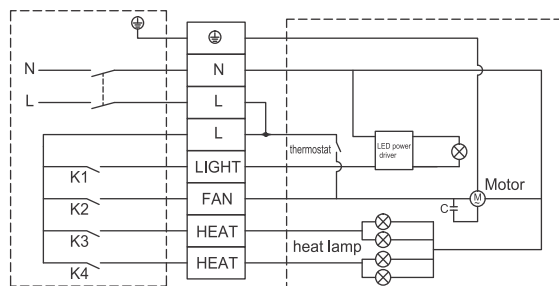


## ELECTRICAL WIRING

The bathroom heater unit must be wired through either a plug and socket or an all-pole disconnecting switch in accordance with Australian Wiring Rules AS/NZS 3000.

**NOTE:** This product requires a permanent active wired to the L terminal to ensure the thermostat automatically engages the ventilation fan via the N/O contact in the event the internal temperature exceeds 60°C.

1. Clip the switches into the backing plate in the desired order and install the plate on the wall.
2. Connect the wiring to the four switches as shown in the below electrical diagram.
3. Remove the terminal cover on the heater unit and wire according to the label adjacent to the terminal block. Make sure all cables are securely connected and refit the terminal cover.
4. Clean the fascia and globes with a soft moist cloth. Turn on power and check the switch operation.



### MAIN TECHNICAL PARAMETERS

Model No	Input	Motor Power	Noise	Air Volume	Cut-Out Size
M4HDLXWH	220-240V~ 50 Hz	45W	38dB(A)	280m <sup>3</sup> /H	320x320mm

TERMINAL BLOCK  
220-240V AC 50Hz

LIGHT: 10W tri-colour LED  
HEATER: 4 x 275W  
FAN: 45W

## CARE AND MAINTENANCE

1. During the installation of this bathroom heater, please make sure that the person in the bathtub or in the shower area cannot reach the electrical switches and other electrical controllers.
2. This bathroom heater mustn't be installed below the electrical outlet.
3. This bathroom heater mustn't be installed near by the curtains and other combustible materials.
4. This bathroom heater must under no circumstances to be covered with insulation material or similar material.
5. Joists, beams and rafters shall not be cut or notched to install this bathroom heater.
6. Lamps must be cool before cleaning. To clean bulbs and surrounds with a cloth dampened with detergent or liquid glass cleaner.
7. To prolong the life of yours 3-in-1 bathroom heater fan light, avoid using heat lamp alone for longer than 10 minutes. Using the fan function along with the heat lamp to allow cooling of your 3-in-1 bathroom heater light.
8. This appliance is not intended for use by persons (including children) with reduced physical, sensory or mental capabilities, or lack of experience and knowledge, unless they have been given supervision or instruction concerning use of the appliance by a person responsible for their safety. Children should be supervised to ensure that they do not play with the appliance.

## REPLACEMENT GLOBES

HEAT LAMPS: The heat lamps must only be replaced with 275 watt (maximum) globes (Ventair Model VHL275).

CENTRE LAMP: 10 watt (maximum) tri-color led downlight, 3000K, 4000K, 5000K. (Ventair Model MDL10-New).

## CLEANING SCHEDULE

### Fascia and Air Intakes

**Clear Air Passages (Monthly):** Use a vacuum cleaner with a soft brush attachment over the fascia, including all edges, gaps, and openings. Removing dust from any accessible entry point ensures the motor does not overheat.

**Internal Blade Clean (Every 6 Months):** Remove the fascia (by removing heat lamps and unhooking internal tension springs) and gently wipe the impeller. Dust buildup here reduces extraction power and strains the motor.

## Ventilation & Usage

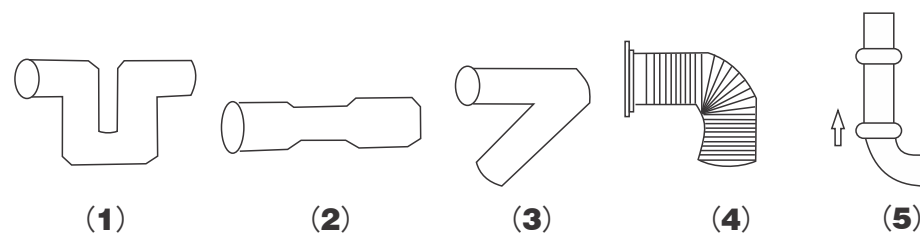
**Post-Shower Run (5–10 Minutes):** Leave the fan running for 5–10 minutes after use to clear moisture. Ask your electrician about installing a Ventair Run-on Timer (VTROTIMER) to automate this and ensure the fan switches off after a set period.

**External Vent Check (12 Months):** Periodically inspect the outside wall or soffit vent for blockages like lint or debris.

## IMPORTANT INSTALLATION TIPS:



**Avoid the below duct configurations:** To ensure maximum possible airflow & performance, flexible ducting should be fully expanded with no unnecessary bends or vertical runs



**NOTE:** When installing the fan in a bathroom, the duct should decline downwards about 10 degrees.

