

INSTALLATION, USE AND CARE INSTRUCTIONS



THE AIR MOVEMENT SPECIALISTS

OLSON 200 LED MODEL: OLSWURD-LED



BEFORE OPERATING THIS PRODUCT, READ AND FOLLOW THESE INSTRUCTIONS.

Save these instructions for future reference

Included in the box:

Main body with fascia	1 piece
Installation instructions and cutout-template	1 piece
Warranty card	1 piece

TECHNICAL SPECIFICATIONS

Input Voltage: 220-240V~ 50Hz
Motor Power: 45W
LED Power: 10W
IP Rating: IPX2
Climatic Class: T
Air Delivery: 270 m³/h
Cut Out Size: Ø240 mm
Duct Size: 125mm



NOT FOR DIY
PROFESSIONAL INSTALLATION REQUIRED



DO-NOT-COVER

**Do not cover or install
flush against building materials**

Dear customers,

Thank you for selecting this VENTAIR Ceiling Exhaust Fan.

When using any electrical product, basic safety precautions should always be followed. PLEASE READ ALL INSTRUCTIONS CAREFULLY BEFORE USING THE PRODUCT.

IMPORTANT: This VENTAIR Exhaust Fan must be installed to comply with the appropriate council regulations and the Australian and New Zealand wiring rules AS/NZS3000:2018 or latest edition thereof and all electrical work must be carried out by a licensed electrician.

Please note that the cabling required for the installation of this appliance are not included. Suitable cabling, rated at a minimum 10 Amp load and no lighter than ordinary duty, must be used during installation and wiring.

IMPORTANT CONSIDERATIONS BEFORE INSTALLING:

For effective exhaust fan operation and condensation management, replacement air must enter the room. This typically occurs via a gap under the door (approx. 20mm) or, ideally, a door vent. Avoid opening windows, especially in cool weather, as this introduces cold air and can increase condensation.

Install only in flat ceilings – no sloping ceilings or walls. Before cutting, thoroughly check the ceiling space for obstructions, adequate height, and any electrical wiring.

WARNING

- 1) Use this unit only as per this manual. Any use not recommended by the manufacturer may lead to damage, fire, electric shock, or injury.
- 2) All wiring must be carried out by a licensed electrician in accordance with all applicable national / local codes and standards.
- 3) Ensure the power is off before commencing the installation.
- 4) When cutting the ceiling or wall, do not damage any hidden electrical wiring or utilities.
- 5) The unit must be properly earthed.
- 6) To avoid dangerous gas leakage into your bathroom, the duct must not share a flue with gas water heaters or open-fire appliances.
- 7) The unit must be isolated from the power by means of a plug or an all-pole disconnection switch with a contact separation of at least 3mm in each pole.
- 8) The power cable must withstand a minimum 10A load.
- 9) This appliance is not intended for use by persons (including children) with reduced physical, sensory or mental capabilities, or lack of experience and knowledge, unless they have been given supervision or instructions concerning the use of the appliance by a person responsible for their safety. Children should be supervised to ensure that they do not play with the appliance.
- 10) To prevent electric shock, do not touch the unit, switches or power cord with wet or damp hands.
- 11) Do not cover the unit with insulation or any other material.
- 12) Ensure the unit is installed in accordance with bathroom zone classifications (AS/NZS 3000:2018 Clause 6.2).
- 13) This product is rated IPX2 and is not suitable for direct water exposure.
- 14) Do not install the unit in areas subject to water leakage or high spray.
- 15) Always operate the product from a power source of the same voltage, frequency and rating as indicated on the product identification label.
- 16) Do not operate any product with a damaged cord or plug, if the product malfunctions, if it has been dropped or appears damaged in any way.

INSTALLATION

1) Cutting a vent (if required)

For installation where external venting is required, locate a suitable location in the exterior wall to vent out the exhaust fan air/steam and cut out a 130mm hole.

2) Ceiling Thickness

For ceilings 13mm thick or less, secure the fan by pushing in the three bar clamps and tightening screws (Figure 1). For thicker ceilings, remove the bar clamps and use wood screws (not supplied) through the three holes in the outer lip to secure.

3) Ducting

Put one end of a 125mm diameter duct (not supplied) into the vent cut out and fill the space around the hole using a suitable sealant where necessary (not supplied) (Figure 2).

4) Location

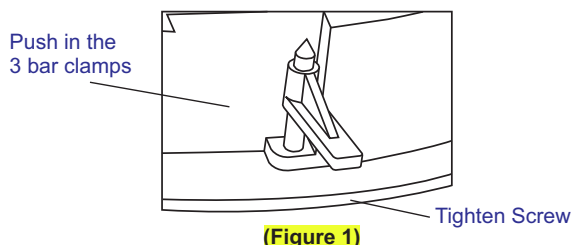
For the fan to work efficiently, there should be a minimum height of 2m from the fascia to the ground.

5) Preparing the Ceiling

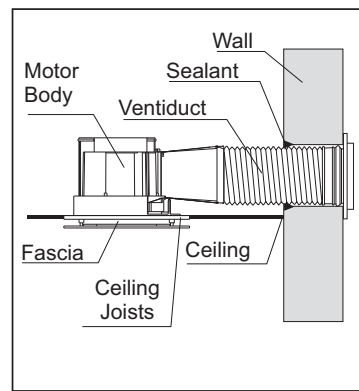
Using this card as a template, mark and cut the ceiling hole. Keep at least 250mm from edges/walls. A minimum 200mm clearance in the ceiling is needed (Figure 4). Verify space, avoid joists, and check headroom before cutting.

6) Wiring

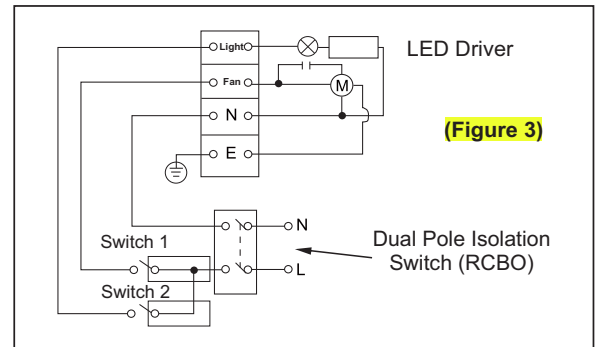
Switch OFF the power before carrying out any wiring connections and wire the unit according to the diagram below (Figure 3).



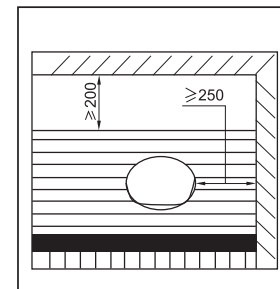
(Figure 1)



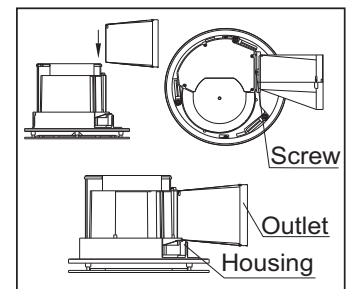
(Figure 2)



(Figure 3)



(Figure 4)



(Figure 5)

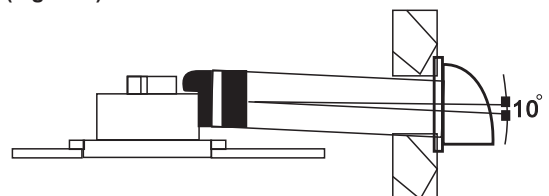
7) Mounting the Fan

First, orient the fan housing so its outlet aligns with the in-house ducting. Once aligned, insert the outlet into the duct.

Next, remove the screw near the fan's outlet with a screwdriver. Slide the outlet along the body slot, then tighten the screw to secure the outlet and body together.

Finally, insert the entire unit into the ceiling hole, as shown in figure 5. After inserting the fan assembly into the ceiling, rotate the swing clips to hold fan body in place (Figure 8).

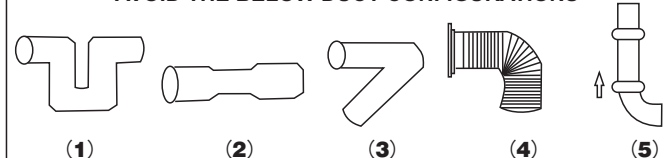
When installing the fan in a bathroom, the duct should decline downwards about 10 degrees to aid condensation removal (Figure 6).



(Figure 6)

NOTE: To ensure maximum possible airflow and performance, flexible ducting should be fully expanded with no unnecessary bends or vertical runs. Figure 7 illustrates examples of poor duct layout.

AVOID THE BELOW DUCT CONFIGURATIONS



(Figure 7)

7) Mounting the unit in the ceiling

- After inserting the fan assembly into the ceiling, rotate the swing clips to hold fan body in place (Figure 9).
- Tighten screws so mounting clips clamp onto the ceiling board (Figure 10).

8) Attach the fascia

Connect the LED plug on fascia to motor body, then put the two springs on the fascia into the two slots in the unit.

OPERATION

- 1) Use the on/off switch to start or stop the unit.
- 2) Running the fan can exhaust odours and steam in a quick and efficient way.

IMPORTANT

- In the event of an electrical issue, immediately shut the power off at the main switchboard and contact a local, licensed electrician for inspection and any necessary service work.
- To prevent personal injury and avoid damaging the unit, never insert fingers or any objects into the fan.
- Do not install the unit in areas with severe water leakage.

MAINTENANCE

- Shut power off before cleaning or maintenance.
- Wipe fascia with care using a soft, damp cloth (neutral detergent may be used).
- Reattach fascia only when completely dry.

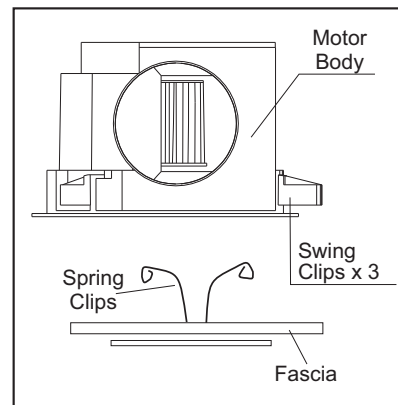
WARRANTY INFORMATION

Warranty Period: 3 year replacement warranty.

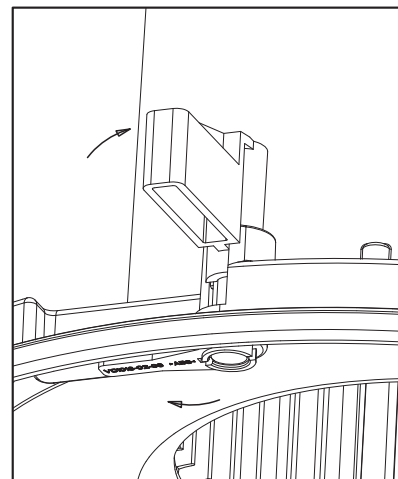
In-home (labour): N/A

Lodging a Warranty Claim: All warranty claims are lodged online by visiting <https://ventair.com.au/warranty/warranty/>

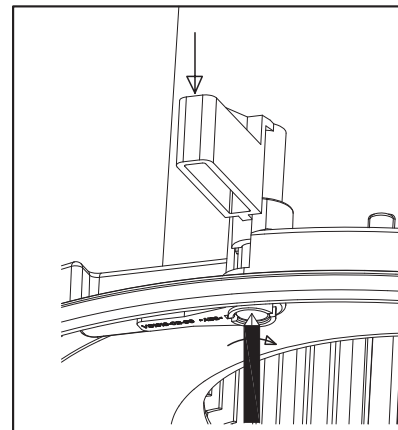
Warranty terms and conditions apply. Refer to the enclosed warranty card for additional information.



(Figure 8)



(Figure 9)



(Figure 10)

Ventair is leading the Industry by ensuring all airflow data is gathered in accordance with International industry standard ISO 5801. ISO (International Organisation for Standardization): An International standard tested under strict guidelines providing accurate data and commonly used in the professional specifying market.



Do not dispose of electrical products with household waste. Please check with your local council for advice on disposal or recycling. If electrical appliances are disposed of in landfills or dumps, hazardous substances can leak into the groundwater and get into the food chain, damaging your health and well-being.

VENTAIR PTY LTD
4 CAPITAL PLACE
CARRUM DOWNS VIC 3201
PH: 03 9775 0556
EMAIL: support@ventair.com.au
WEBSITE: www.ventair.com.au