



White (RAPJET-W)



Silver (RAPJET-S)

RAPID DRY JET

HAND DRYERS



These ultra powerful units are equipped with digital circuit controls and advanced infrared auto sensing technologies. Unit starts when user places hands in a comfortable position within the unit. The Rapid Dry Jet requires minimal maintenance and is available with a white or silver coloured front face.

- Advanced infrared auto sensing technology.
- Hygienic hands free operation for heavy duty high traffic use.
- Concentrated air flow for rapid drying times.
- Includes excess water tray that can be easily removed for emptying.
- Easy to clean stylish casing with ergonomic design.
- Water resistant design for a longer lifespan.
- Unique high speed motor for low power consumption.
- Warm or cold air function.
- Plug and lead included as standard.
- Auto-reset internal thermal protection.
- Electrical Test Standard: AS/NZS 60335.1:2011

incl. Amdts. 1-3 AS/NZS 60335.2.23:2012.

*Conditions apply. For details visit: fantechtrade.com.au/warranty

ENERGY SAVING

The Rapid Dry Jet features a unique high-speed motor that has a low overall power consumption, concentrated air flow and a quick drying process. It is programmed to cease operation after a standard drying time has been reached to reduce energy consumption.

SAFE

The Rapid Dry Jet smart hand dryer has multiple safety features that protect the unit against overheating and electrical surges. The user is kept safe and the hand dryer is protected. It also features an excess water tray that helps to minimise water landing on the floor.



STRONG

The robust, streamline casing protects the technology within, while being easy to maintain and clean.

HYGIENIC

Its easy to clean design, non-touch operation and anti-bacterial filter makes the Rapid Dry Jet perfect for areas with hygiene requirements.

It also comes with a brush to clean the water tray drain hole.





Top View (White Model)

ERGONOMIC & STYLISH

Designed to be aesthetically appealing, the Rapid Dry Jet will keep your washroom looking modern. To use the unit, simply place hands in the drying area and move them up and down. Hands will be dry within seconds.



SMART

Accurate and reliable air control is a result of a built in smart microchip and advanced infrared technology. The hygienic hands free operation automatically starts when the sensor is triggered. The unit will stop operation as soon as hands move away. (Maximum drying time: 17 seconds).

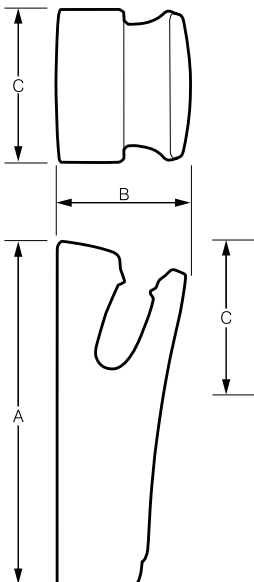
SPECIFICATIONS

MODEL NO.	FRONT FACE COLOUR	M ³ /HR	AVG. dB(A) @ 3M	RATED POWER	VOLTS	WEIGHT KG	IP RATING
RAPJET-S	SILVER	210	78	1400W	240V	8.5	IP22
RAPJET-W	WHITE	210	78	1400W	240V	8.5	IP22

DIMENSIONS

MODEL NO.	A	B	C
RAPJET-S	670	250	300
RAPJET-W	670	250	300

All dimensions in mm



COMPONENTS

1. Countdown Indicator
2. Sensor
3. Air Outlet
4. Side Window
5. Power Switch
6. Heat Switch
7. Lighting Screen
8. Front Cover
9. Excess Water Tray

