



HIGH AIRFLOW 3 IN 1 BATHROOM FAN, HEAT & LIGHT

IMPORTANT INSTALLATION INSTRUCTION AND WARRANTY INSTRUCTIONS

Thank you and congratulations on your purchase of the Ventair 3 in 1 Bathroom Fan, Heat & Light. Please read these instructions carefully before installing and using the product. Keep the instructions handy for future reference.

Electrical wiring must only be done by a licensed electrician and a "Certificate of Compliance" must be issued upon completion of the installation.

LOCATION

The unit must be located and installed in accordance with AS/NZS 3000 and local building codes and regulations concerning the discharge of air have to be fulfilled. The unit can be installed in any room that requires direct radiant heating and circulated air flow such as bathrooms, ensuites, laundries etc. The unit can be installed in flat ceilings with a minimum height of 2 meters. At least 250mm height clearance in the ceiling cavity is required to ensure sufficient ventilation for moisture to disperse. The unit must also be installed at least 400mm away from the walls.

Ensure adequate inlets exist through windows, vents or under the door for air flow.

POWER

AC220-240V, 50/60Hz electrical supply is required. The unit can be connected to a lighting or power circuit if loading permits. All electrical work must be carried out in accordance with AS/NZS 3000 or latest edition thereof.

MOUNTING

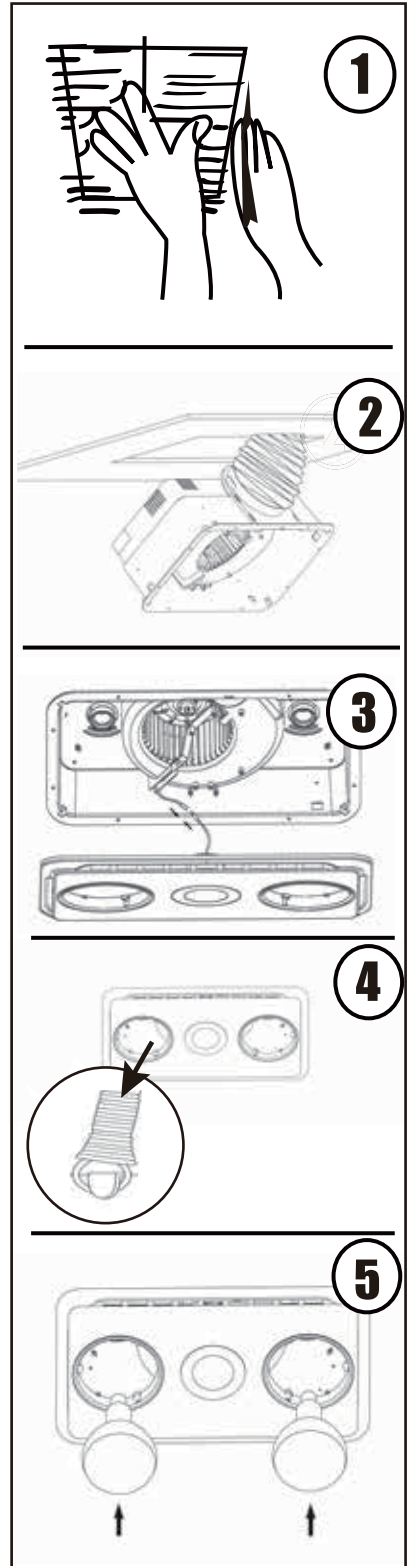
1.The unit may be mounted either between joists using the inbuilt clip fasteners or against a joist using a screw through the flange plate. Use this card in its open state as a template. Place in the required location and mark out the hole cutting size. Hole size is 465mm x 245mm with a 180mm x 25mm bulge.

2.Before commencing cutting ensure that the area behind the intended location is clear of all cables, pipes and joists. Once clear, cut out the section along the previously marked lines.

3.Remove 2 heat lamps from the bathroom heater then remove the plug of the led downlight inside the housing. Unfasten the fascia retaining spring clips inside the housing, and remove the fascia. Connect the ducting if required to the outer grill of the unit. Insert the unit into the square hole being sure to pull the side springs inward so that the body can pass through the hole without damaging the plaster. Ensure that the unit is held securely in place by the clips. If required, additional screws can be used to aid holding the unit in the ceiling. Screw holes are provided in the flange for this purpose.

4.Connect the led downlight plugs firstly. Hold the fascia against the body of the heater and the ceiling and attach the securing spring clips to hold the fascia in place.

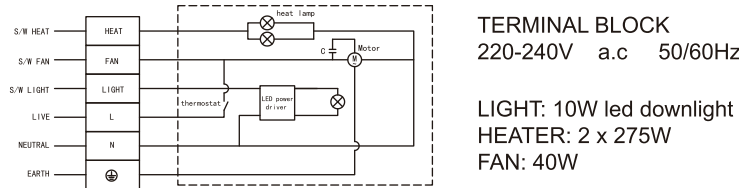
5.Now screw in the two large heat lamps into the lamp holder through the holes provided in the fascia. The globes should be screwed up firmly to ensure a good electrical contact but don't over tighten.



ELECTRICAL WIRING

The bathroom heater unit must be wired in accordance with Australian Wiring Rules AS/NZS 3000.

Note: This unit is fitted with a thermostat switch which will operate to automatically switch the fan on in the event that the internal temperature of the unit exceeds 60 °C .



MAIN TECHNICAL PARAMETERS

Input	Motor Power	Noise	Air Volume	Hole-cutting Size	Model No
220-240V 50/60Hz	40W	44dB(A)	360m³/H*	465x245mm	VHF2W

Ventair is leading the industry by ensuring all airflow data is gathered in accordance with International Industry Standard ISO 5801.

- ISO (International Organization for Standardization): An International standard tested under strict guidelines providing accurate data and commonly used in the professional specifying market.

CARE AND MAINTENANCE

1. During the installation of this bathroom heater, please make sure that the person in the bathtub or in the shower area cannot reach the electrical switches and other electrical controllers.
2. This bathroom heater must not be installed below the electrical outlet.
3. This bathroom heater must not be installed nearby the curtains and other combustible materials.
4. This bathroom heater must under no circumstances be covered with insulation material or similar material.
5. Joists, beams and rafters shall not be cut or notched to install this bathroom heater.
6. Lamps must be cool before cleaning. To clean bulbs and surrounds, wipe with a cloth dampened with detergent or liquid glass cleaner.
7. To prolong the life of yours 3-in-1 bathroom heater fan light, avoid using heat lamp alone for longer than 10 minutes. Using the fan function along with the heat lamp to allow cooling of your 3-in-1 bathroom heater light.
8. This appliance is not intended for use by persons (including children) with reduced physical, sensory or mental capabilities, or lack of experience and knowledge, unless they have been given supervision or instruction concerning use of the appliance by a person responsible for their safety.

Children should be supervised to ensure that they do not play with the appliance.

REPLACEMENT LAMPS

HEAT LAMPS: The heat lamps must only be replaced with 275 watt (maximum) lamps.

CENTRE LAMP: 10 watt (maximum) led downlight, 4000K, 700LM, size: 108mm x 68mm (Available from place of purchase of Ventair Pty Ltd.)



BATHROOM HEATER WARRANTY CARD

This unit must be installed by a qualified licensed electrician. Every Ventair 3 in 1 is thoroughly inspected and tested before being released for sale. In addition to any warranties or conditions implied by applicable Statue or Regulation, Ventair Design warrants all of its bathroom heaters against defective workmanship and faulty materials for 3 years from the original date of purchase. Ventair Design undertakes, at its option, to repair or replace, free of charge, each product or part thereof subject to the below warranty conditions:

- 1) The fan or relevant part has not been modified, subjected to misuse, neglect, or been involved in an accident.
- 2) The repairs are not required as a result of normal wear and tear.
- 3) The product was installed by a licensed electrical contractor in accordance with this instruction manual.
- 4) No solid state speed control device has been is used with the appliance.
- 5) A copy of the original receipt of purchase is presented.
- 6) Globes supplied are not covered by this warranty.

Ventair can not be held responsible for any repair other than those carried out by its or one of its Authorised Service Agents. Please keep this warranty card in a safe place. This card must be produced in the event of service being required.

DATE OF PURCHASE: _____

RETAILER: _____

RECEIPT NUMBER: _____

INSTALLED BY: _____

LICENSE#: _____ PH: _____

DESCRIPTION OF FAULT: _____