

H4W (KLEIN 4)

3 IN 1 BATHROOM EXHAUST, HEAT & LIGHT

IMPORTANT INSTALLATION AND WARRANTY INSTRUCTIONS

Thank you and congratulations on your purchase of the Ventair Klein 4 Bathroom unit. Please read these instructions carefully before installing and using the product. Keep these instructions handy for future reference.

Electrical wiring must only be done by a licensed electrician and a "Certificate of Compliance" must be issued on completion of the installation.

LOCATION:

- 1) Precautions must be taken to avoid the back-flow of gases into the room from the open flue of gas or other fuel-burning appliances.
- 2) This unit should not be installed within 800mm of any additional or existing recessed heaters.
- 3) The switches and other controls of the appliance should be installed so that they cannot be touched by a person in the bath or shower.

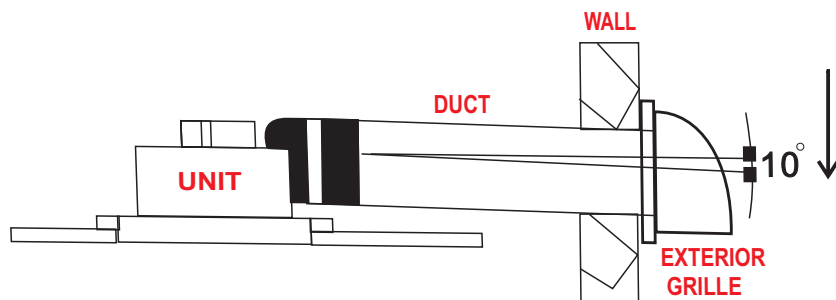
The unit must be located and installed in accordance with AS/NZS 3000 and local building codes and regulations concerning the discharge of air must be fulfilled. The unit can be installed in any room that requires direct radiant heating and circulated air flow such as bathrooms, ensuites, laundries etc. The unit can be installed in flat ceilings with a minimum height of 2 meters from the floor. At least 220mm clearance in the ceiling cavity is required to ensure sufficient ventilation for moisture to disperse. The unit must also be installed at least 400mm away from the walls. Please also keep 200mm clearance between the unit and thermal insulation when installing. Ensure adequate inlet air is available through vents or under the door, the exhaust will perform poorly in an airtight room.

POWER:

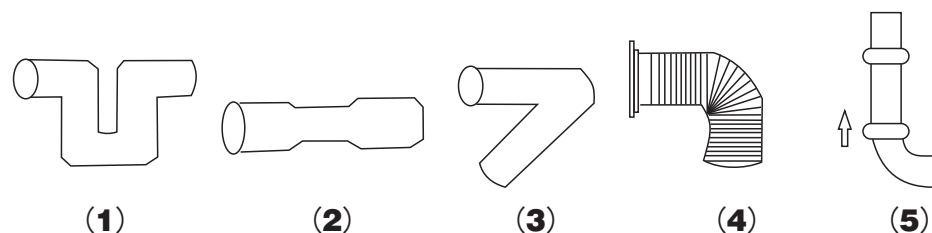
An AC220-240V 50Hz electrical supply is required. The unit can be connected to a lighting or power circuit if loading permits. All electrical work must be carried out in accordance with AS/NZS3000 or latest edition thereof, and local building codes and regulations. This unit is supplied with a four-gang switch which allows either two or four Heat globes to be active. Ensure that supply power is isolated before commencing installation.

NOTE: Ducting should decline about 10 degrees to allow proper drainage.

To maximise performance, keep ducting as short and straight as possible, avoid sharp bends and vertical runs.



Below duct configurations will reduce performance.



MOUNTING:

1. The unit may be mounted either between joists using the inbuilt clip fasteners or against a joist using a screw through the flange plate. Use this card in its open state as a template. Place in the required location and mark out the hole cutting size. Hole size is 320mm x 320mm.

2. Before commencing cutting ensure that the area behind the intended location is clear of all cables, pipes and joists. Once clear, cut out the section along the previously marked lines. Please remove all heat lamps, then assemble the air outlet before mounting the unit into the hole.

3. Connect the ducting to the air outlet assembly. Insert unit into the roof being sure to pull the side clips inwards so the body can pass through the hole without damaging the plaster. Rotate the swing clips to hold the unit in place (figure 1) then tighten screw to let the clip hold onto the ceiling board (figure 2).

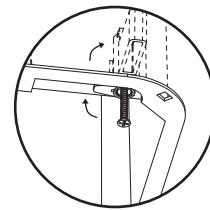


figure 1

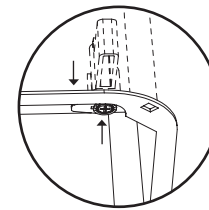
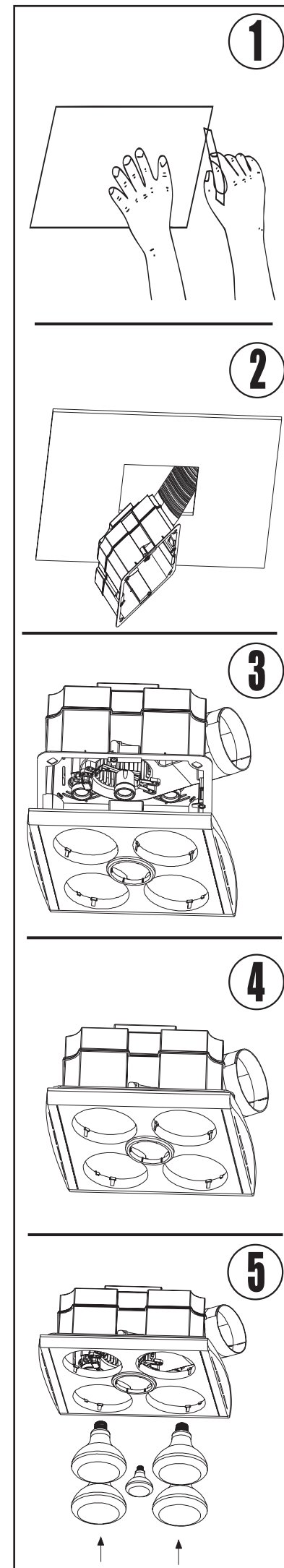


figure 2

4. Hold the fascia against the body of the heater and attach the securing spring clips to hold the fascia in place.

5. Screw the four large heat lamps into the lamp holders through the holes provided in the fascia. The globes should be screwed up firmly to ensure a good electrical contact but do not over tighten. Next, fit the small centre globe in the same way ensuring that it is positioned centrally.

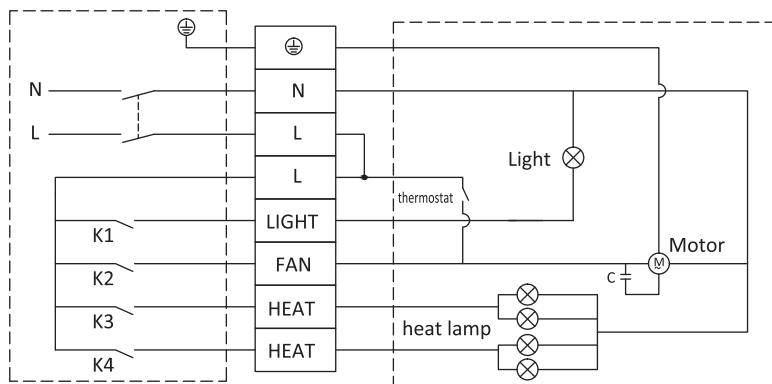


ELECTRICAL WIRING:

NOTE: This unit is fitted with a thermostat switch that will operate to automatically switch the fan on in the event that the internal temperature of the unit exceeds 80°C.

The bathroom heater unit must be wired through either a plug and socket or an all-pole disconnecting switch in accordance with Australian Wiring Rules AS/NZS 3000.

1. Clip the switches into the backing plate in the desired order and install the plate on the wall.
2. Connect the wiring to the four switches as shown in the below electrical diagram.
3. Remove the terminal cover on the heater unit and wire according to the label adjacent to the terminal block. Make sure all cables are securely connected and refit the terminal cover.
4. Clean the fascia and globes with a soft moist cloth. Turn on power and check the switch operation.



TERMINAL BLOCK

220-240VAC 50Hz

LIGHT: 8w

HEATER: 4 x 275w

MAIN TECHNICAL PARAMETERS

Input	Motor Power	Noise	Air Delivery	Cut out size	Model Number
220-240VAC 50Hz	30w	38dB(A)	200m ³ H	320mm x 320mm	H4W

Airflow data gathered in accordance with international industry standard ISO 5801.

ISO 5801 (International Organization for Standardization) provides strict guidelines for testing the performance of fans.

INSTALLATION & MAINTENANCE:

1. During the installation of this bathroom heater, please make sure that the person in the bathtub or in the shower area cannot reach the electrical switches and other electrical controllers.
2. This bathroom heater must not be installed below the electrical outlet.
3. This bathroom heater must not be installed near by the curtains and other combustible materials.
4. Instructions for correct installation required and must include:
 - I) The appliance must, under no circumstances be covered with insulation material or similar material.
 - II) Joists, beams and rafters shall not be cut or notched to install the appliance.
5. Lamps must be cool before cleaning. To clean bulbs and surrounds wipe with a cloth dampened with detergent or liquid glass cleaner.
6. To prolong the life of your 3-in-1 unit, avoid using the heat lamp alone for longer than 10 minutes. Using the fan function with the heat lamps will help cool the unit, extending its lifespan.
7. This appliance is not intended for use by persons (including children) with reduced physical, sensory or mental capabilities, or lack of experience and knowledge, unless they have been given supervision or instruction concerning use of the appliance by a person responsible for their safety. Children should be supervised to ensure that they do not play with the appliance. Switch OFF power and allow to cool before carrying out any maintenance.

ITEM	DESCRIPTION	Replacement Part #
HEAT LAMPS	275W heat lamp	VHL275
CENTRE LIGHT	8 watt R63 LED GLOBE, 800Lm, 4000K NW	VR63LED



BATHROOM HEATER WARRANTY CARD

OUR GOODS COME WITH GUARANTEES THAT CANNOT BE EXCLUDED UNDER THE AUSTRALIAN CONSUMER LAW. YOU ARE ENTITLED TO A REPLACEMENT OR REFUND FOR A MAJOR FAULT AND COMPENSATION FOR ANY OTHER REASONABLY FORESEEABLE LOSS OR DAMAGE. YOU ARE ALSO ENTITLED TO HAVE THE GOODS REPAIRED OR REPLACED IF THE GOODS FAIL TO BE OF ACCEPTABLE QUALITY AND THE FAILURE DOES NOT AMOUNT TO A MAJOR FAILURE.

IMPORTANT BATHROOM HEATER WARRANTY INFORMATION FOR OWNER AND INSTALLER. PLEASE READ AND OWNER TO RETAIN.

BEFORE INSTALLATION: Check all components to ensure there is no visible damage. Should there be any damage, contact Ventair support via email: support@ventair.com.au or ph: (03) 9775 0556 to discuss.

WARRANTY PERIOD: This product is covered against manufacturing defects by a three (3) year limited warranty. This warranty covers you for two (2) years on parts and labour (in-home) followed by an additional one (1) year replacement warranty on the motor(s). During this period Ventair will, at our discretion supply parts or provide a replacement unit of the same or comparable model.

IN HOME WARRANTY SERVICE: Will not be performed to replace anything damaged, scratched or marked. Product must be installed for the in-home warranty to be valid. Is only available for components that require an electrician to install. This service is only available for standard residential installs and must be within 25km of the nearest Ventair service agent.

COMMERCIAL USAGE: All products have a maximum one (1) year warranty when used in a commercial setting and 'in home' service is not applicable.

PLEASE NOTE: Where applicable, fascias and LED lights carry a two (2) year replacement warranty. Included heat lamps are covered by a one (1) year replacement warranty.

- The Ventair warranty Terms & Conditions available at www.ventair.com.au/warranty must be met.
- The unit or relevant part must not have been physically damaged, involved in an accident, modified, subject to misuse, neglect or abuse. Fault must not be the result of normal wear and tear.
- No solid state speed control device has been used with this appliance.
- The product must be installed by a licensed electrical contractor (where applicable) and in accordance with the instruction manual using the supplied Ventair hardware.
- Discolouration or corrosion damage such as rust or surface damage is not covered under warranty. Regular cleaning will generally prevent such issues.
- Installation faults are not covered under warranty, contact the installing electrician to rectify.

If you suspect a manufacturing defect, lodge a warranty by visiting www.ventair.com.au/warranty

You will need to provide the following information:

- Proof of purchase
- The nature of the fault
- The brand, model number and colour of the unit
- The owners name, address and contact number
- Supporting evidence
- Certificate of electrical safety (if requested)

NO CHARGES WILL BE ACCEPTED WITHOUT PRIOR WRITTEN APPROVAL FROM VENTAIR.

MODEL NUMBER: _____

COLOUR: _____

DATE OF PURCHASE: _____

PURCHASED FROM: _____

INSTALLING ELECTRICIAN: _____

ELECTRICIAN LICENSE NUMBER: _____ ELECTRICIAN PHONE NUMBER: _____